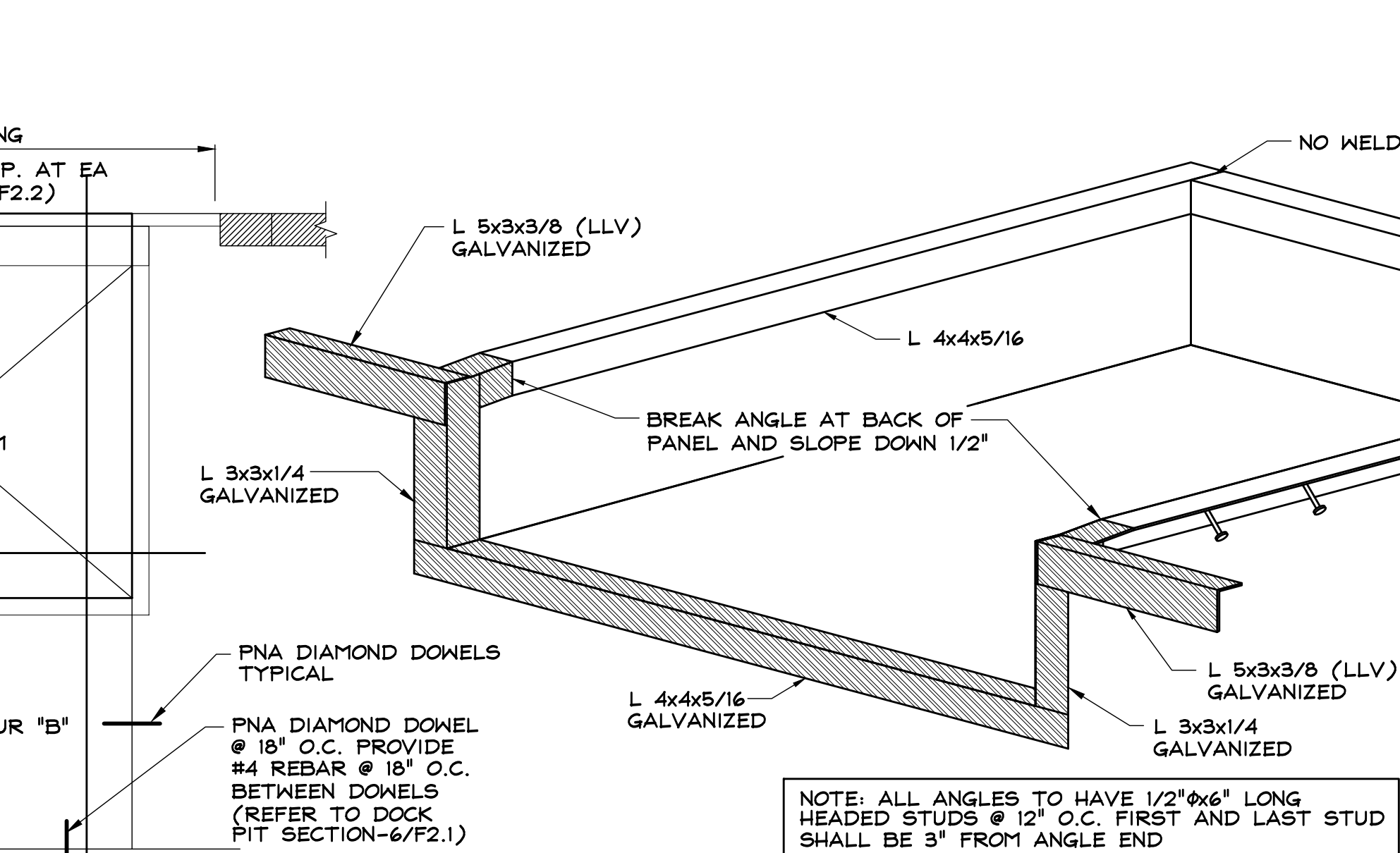


### SECTION 1

SCALE: 3/4" = 1'-0"

F2.2

(ARCO DETAIL S1.1- DOCK PIT PLAN VIEW 11/12/18)

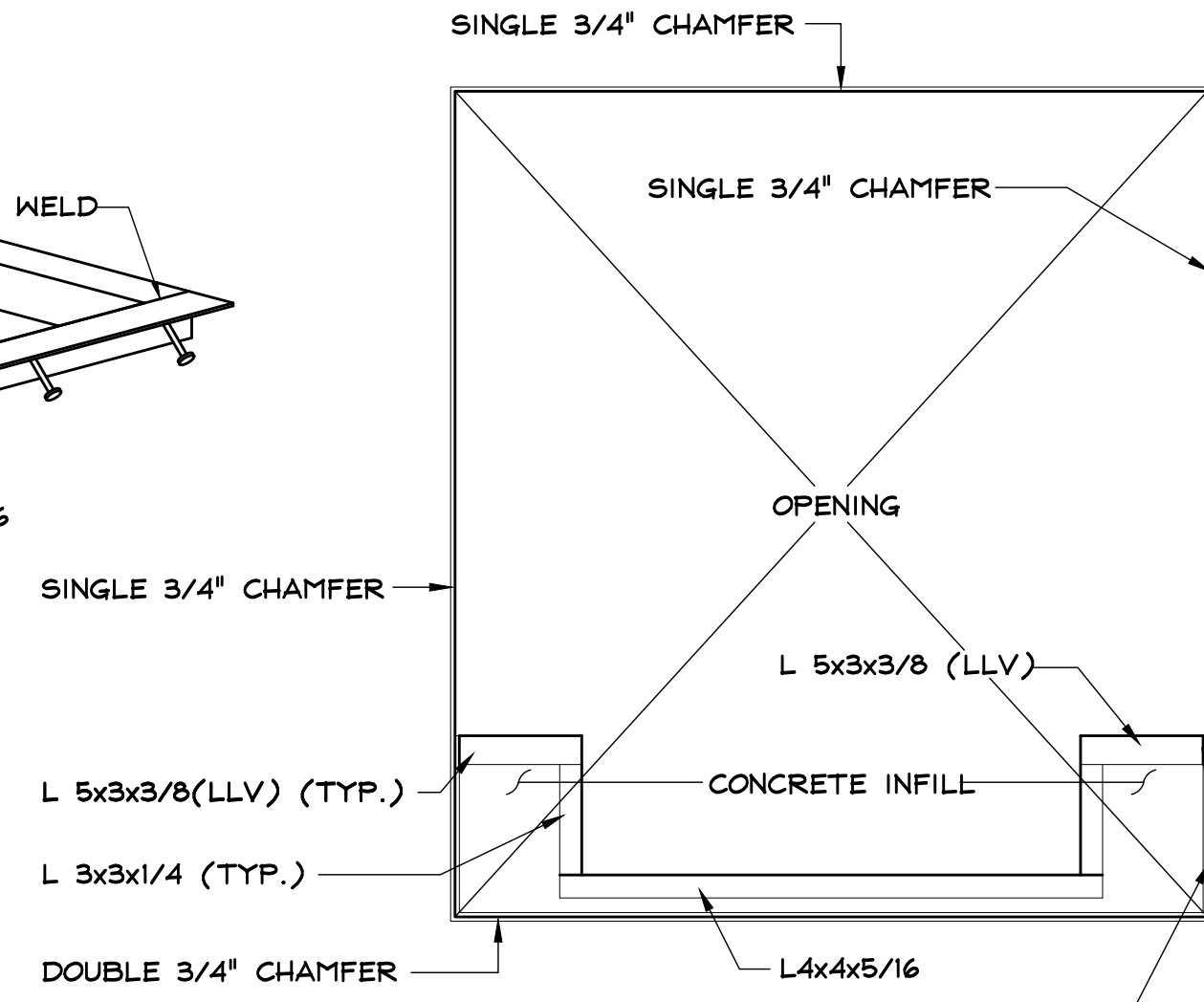


### SECTION 2

SCALE: 3/4" = 1'-0"

F2.2

(ARCO DETAIL S1.2- DOCK PIT ISOMETRIC 11/12/18)

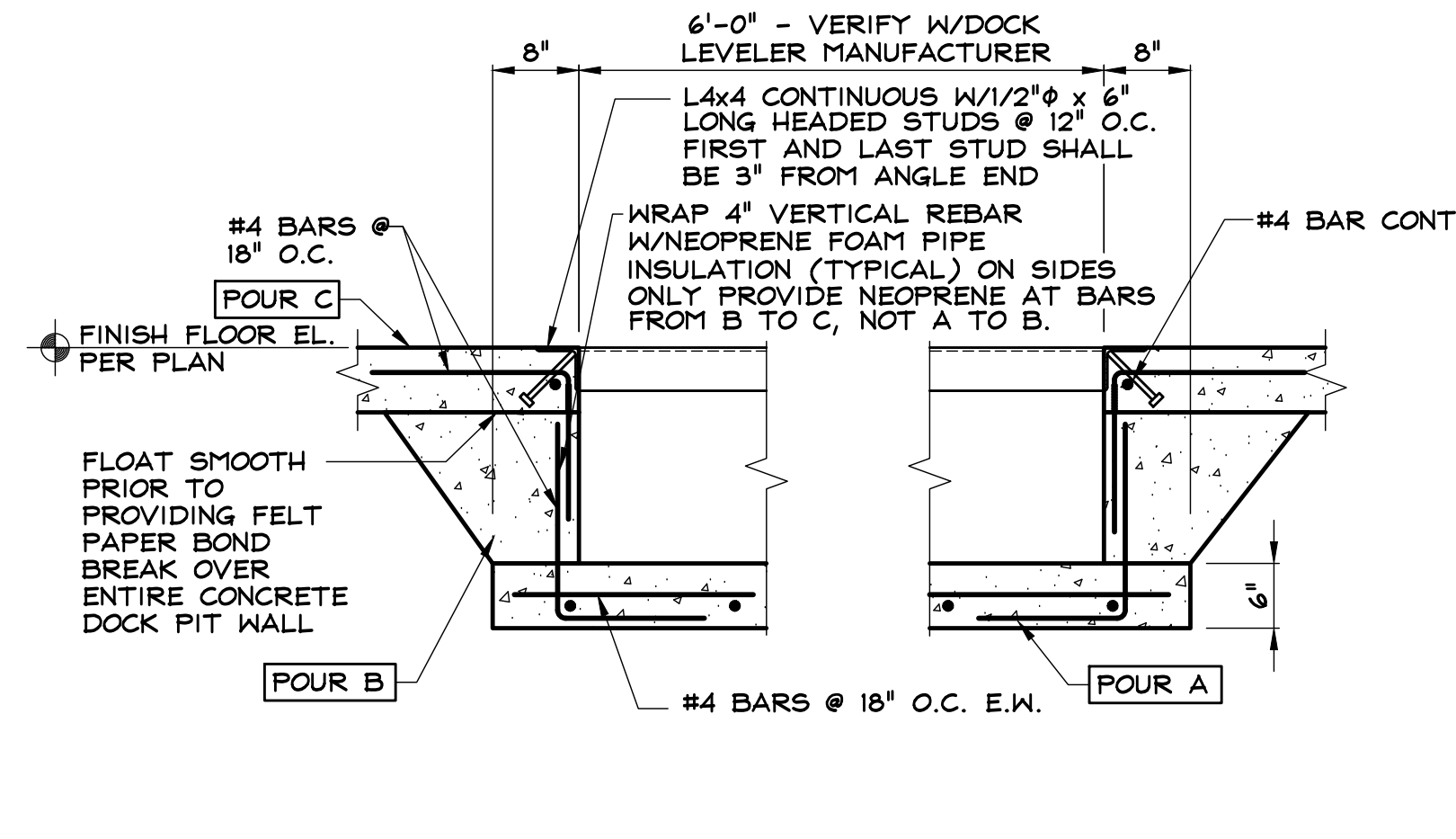


### ELEVATION 3

SCALE: 3/4" = 1'-0"

F2.2

(ARCO DETAIL S1.5- DOCK PIT ELEVATION 11/12/18)

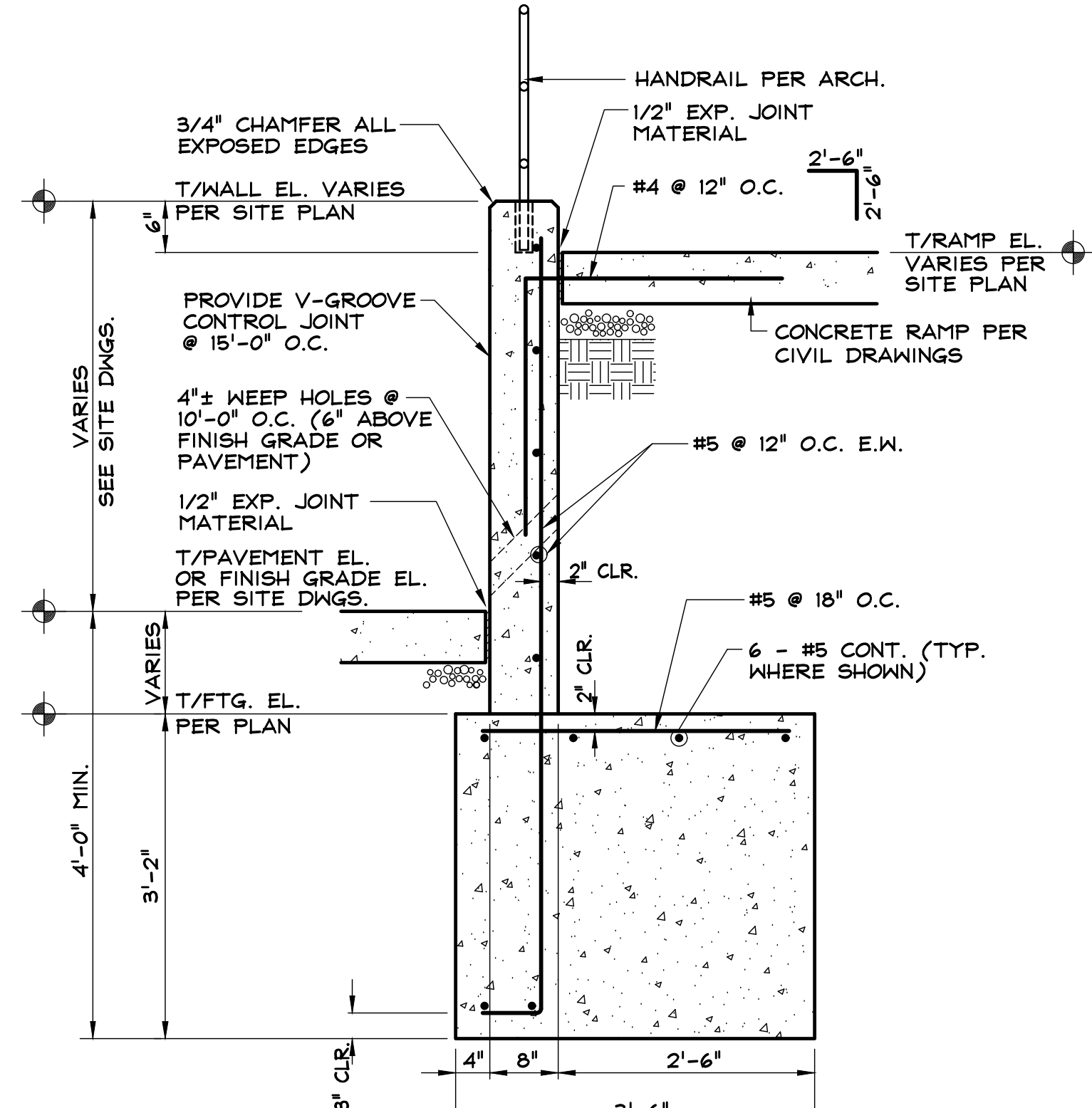


### SECTION 4

SCALE: 3/4" = 1'-0"

F2.2

(ARCO DETAIL S1.4- DOCK PIT CROSS SECTION 11/12/18)

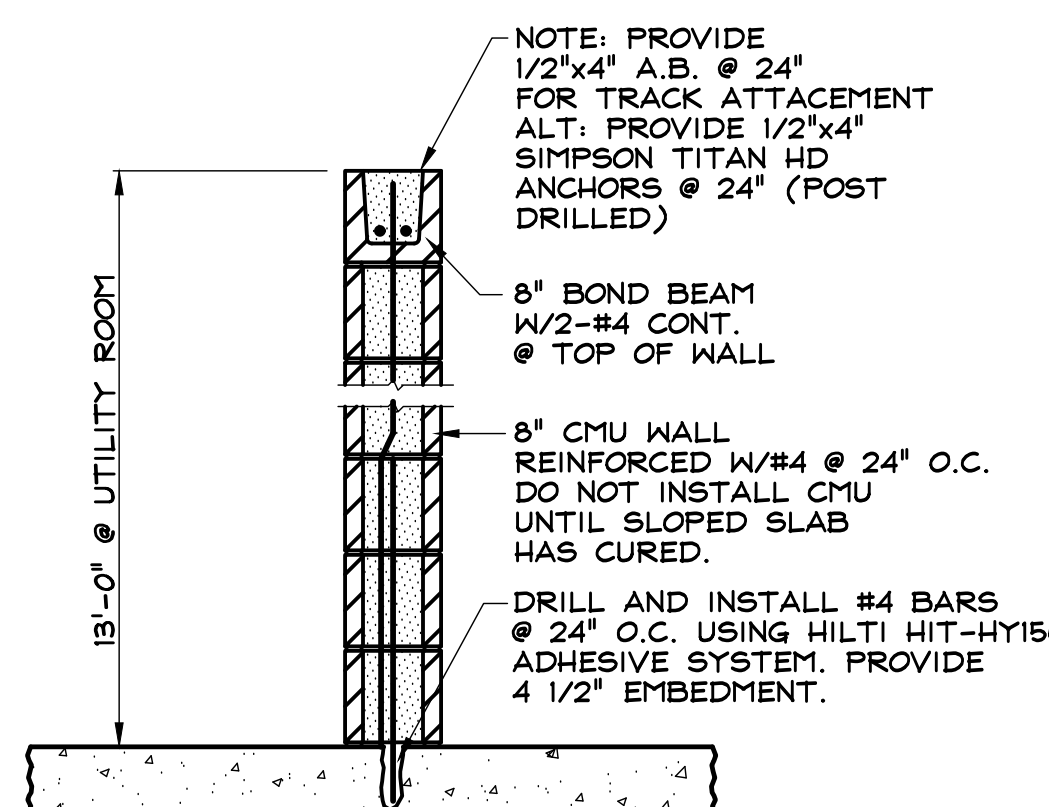


### SECTION 5

SCALE: 3/4" = 1'-0"

F2.2

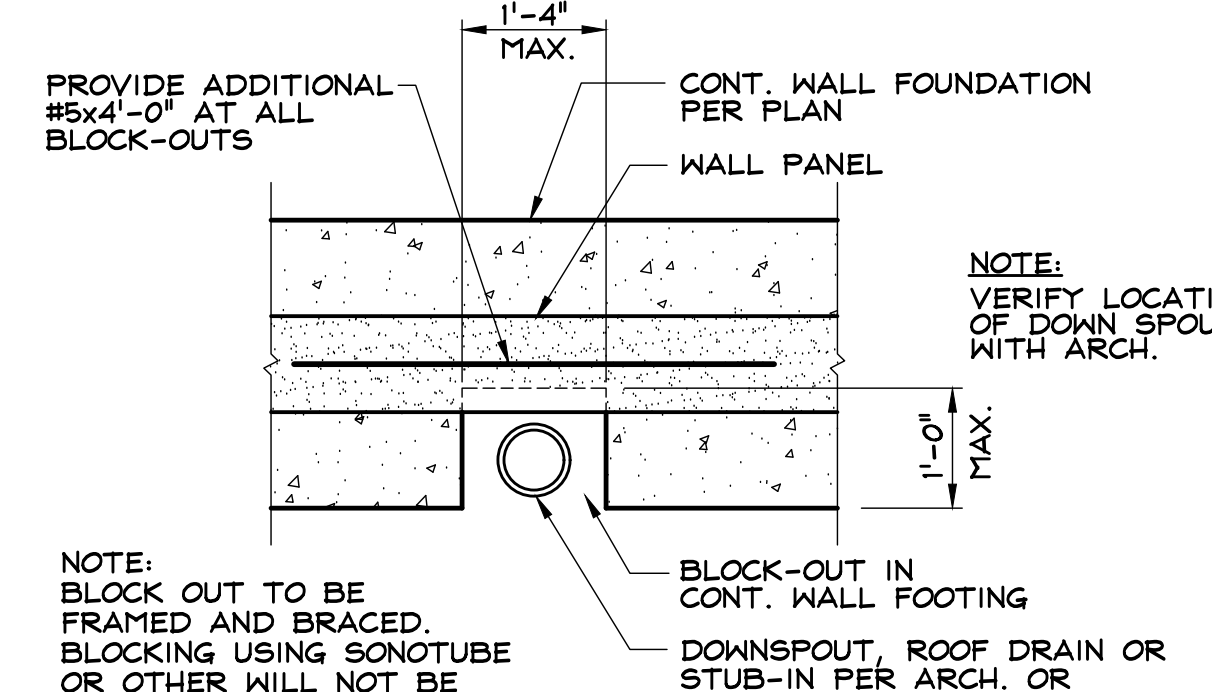
(ARCO DETAIL S1.7- DRIVE IN RAMP WALL 11/12/18)



### TYPICAL DETAIL @ INTERIOR MASONRY WALLS

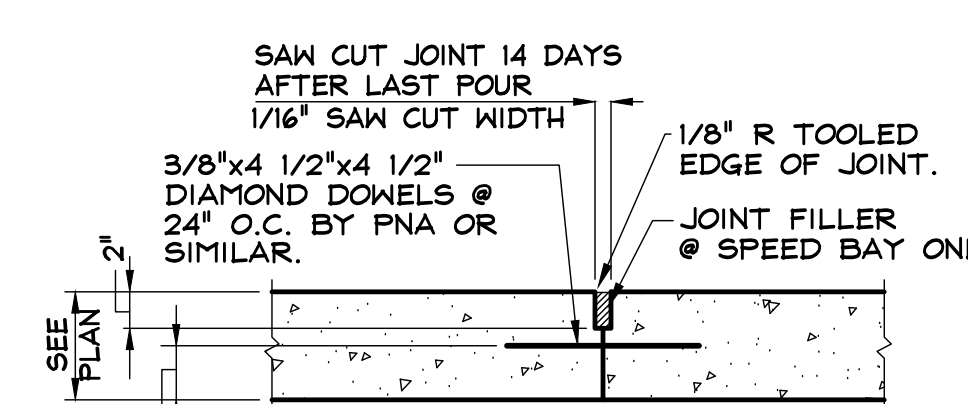
NO SCALE

(UTILITY / ELECTRICAL ROOM)



### TYPICAL DOWNSPOUT, ROOF DRAIN AND UTILITY BLOCK-OUT PLAN

SCALE: NONE

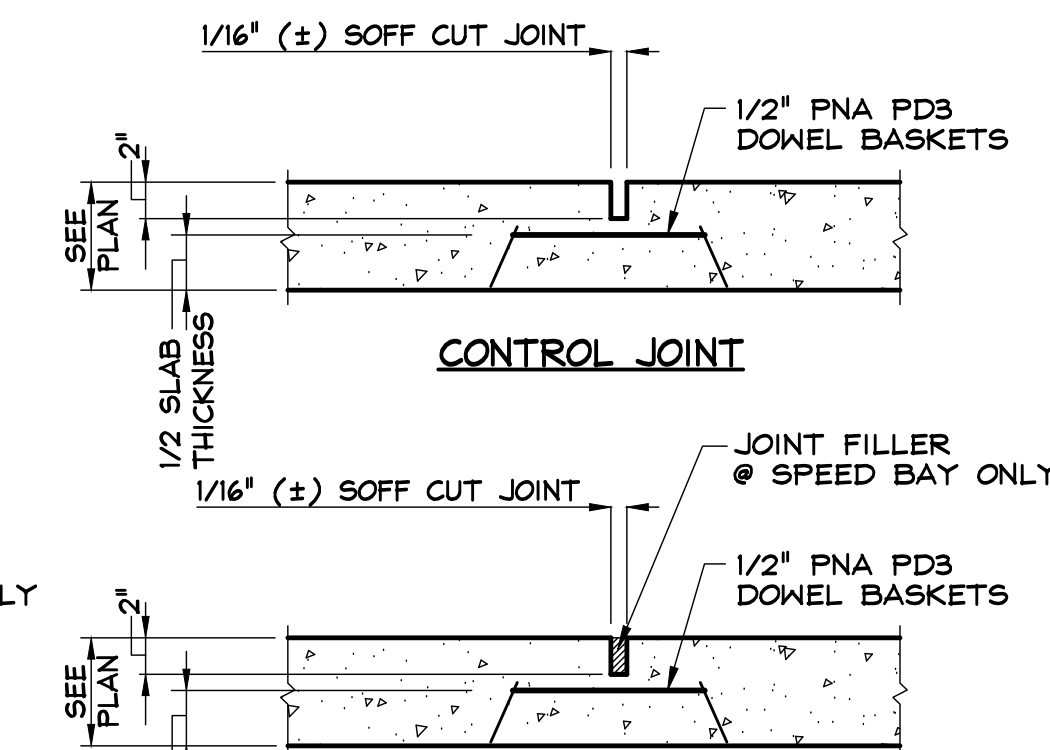


### WAREHOUSE SLAB CONSTRUCTION JOINT

### SLAB ON GRADE JOINTS

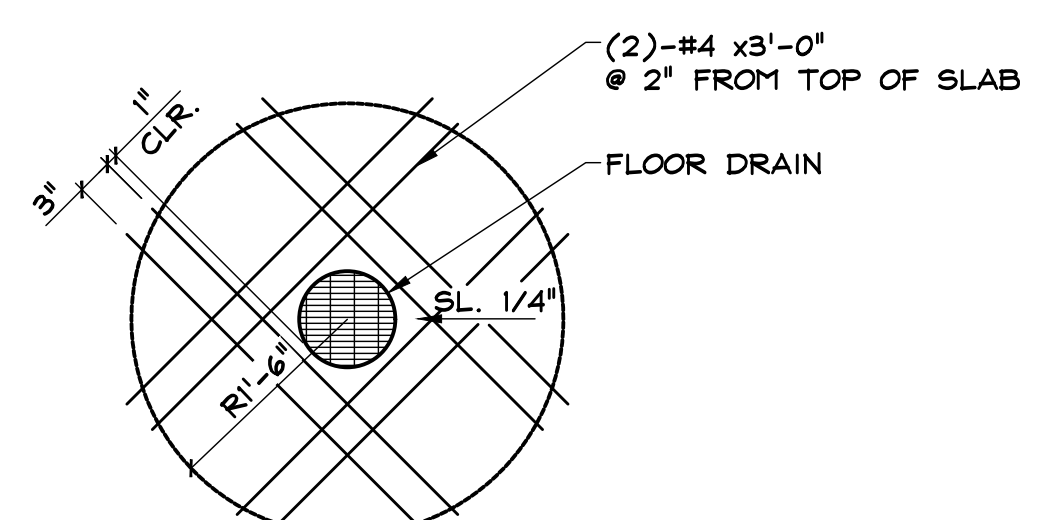
SCALE: NONE

(ARCO DETAIL S1.16)



### CONTROL JOINT

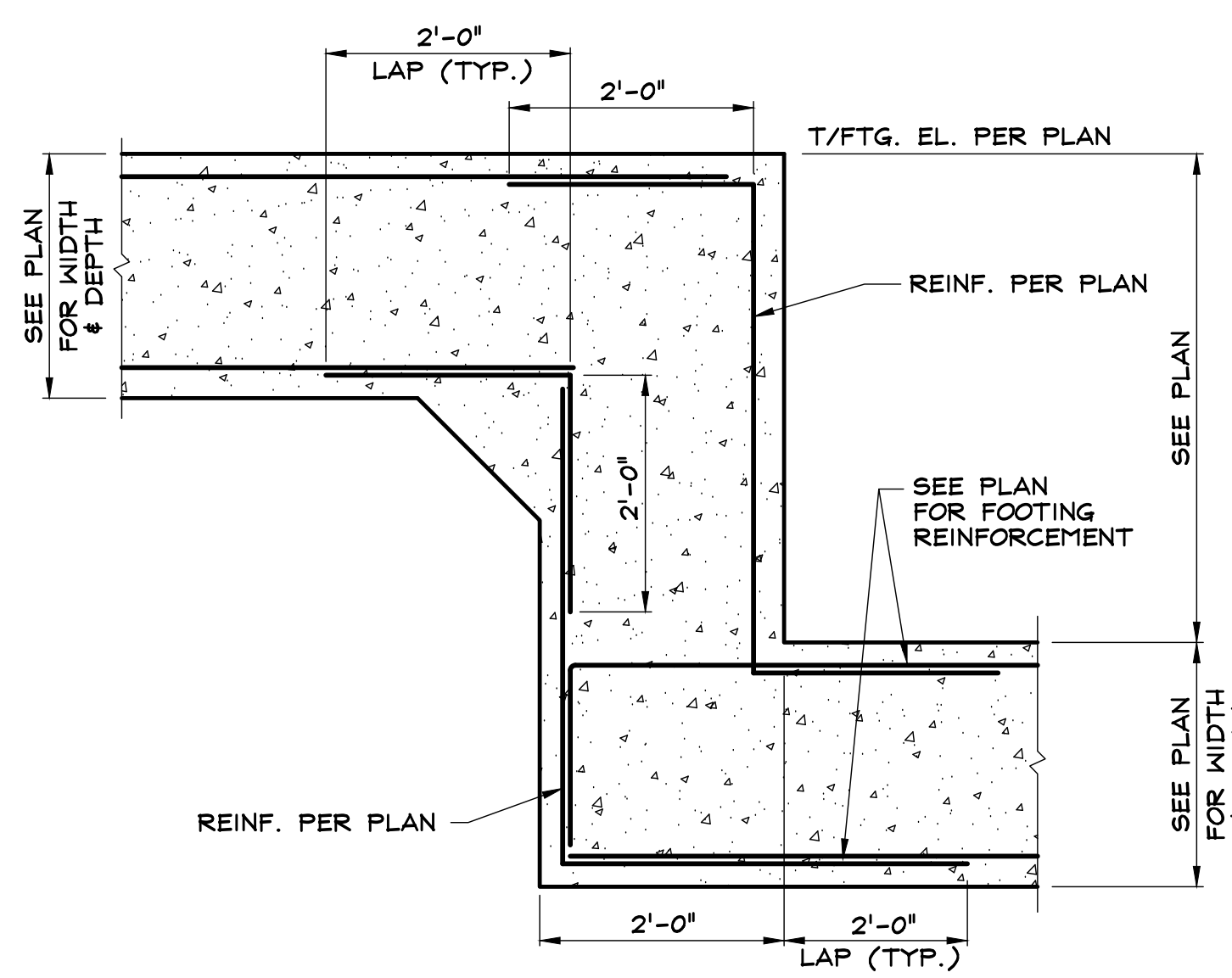
### CONTROL JOINT @ SPEED BAY



### RE-ENTRANT REBAR @ FLOOR DRAINS & BOLLARDS

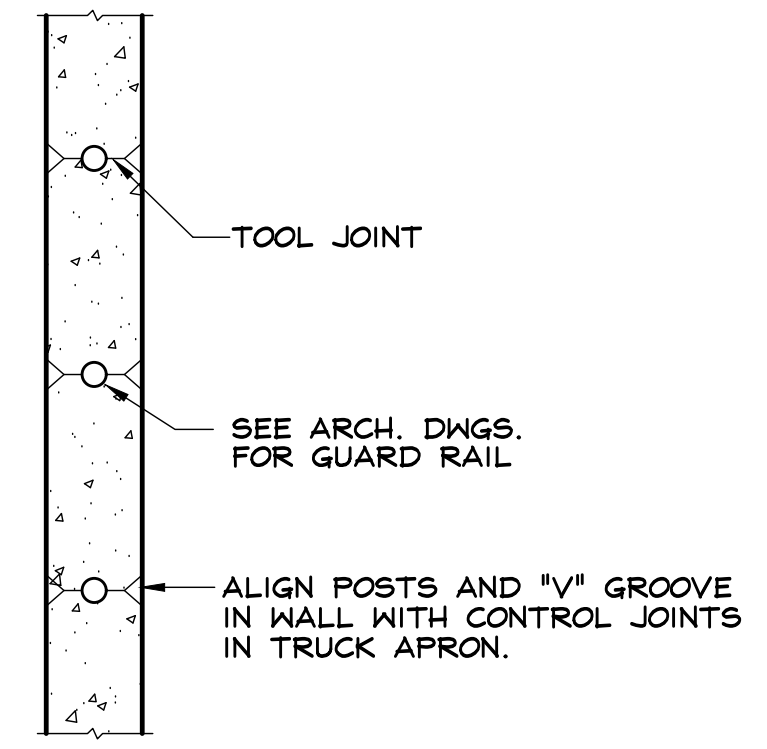
SCALE: 3/4" = 1'-0"

(ARCO DETAIL S1.17)



### TYPICAL STEPPED FOOTING

SCALE: NONE



### TYP. PLAN VIEW OF TOP OF RAMP WALL

SCALE: 3/4" = 1'-0"

(ARCO DETAIL S1.8 TYP. PLAN VIEW OF RAMP WALL 11/12/18)

SUBMITTALS		
NO.	DATE	DESCRIPTION
1	2.1.2022	PROGRESS
2	2.28.2022	95% PROGRESS
3	6.8.2022	PERMIT
4	7.8.2022	FTG. STEPS
5	9.6.2022	AS NOTED
6	9.30.2022	100% BUILDING SET